

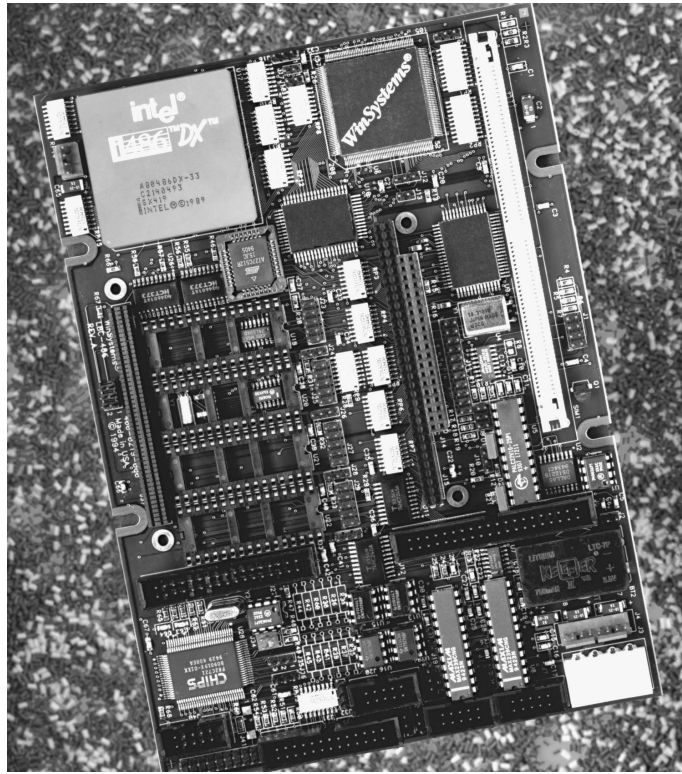
LBC-486DX2 Embedded PC

- IntelDX2™ Processor at 66 MHz or IntelDX4™ Processor at 100 MHz
- Low Cost Industrial Embedded PC
- Up to 64 MB Onboard Parity-Checked DRAM
- SSD Supports Bootable RAMDISK and ROMDISK
- COM1, COM2 and LPT Onboard
- FDC, IDE and Keyboard Controller
- Local Bus Support for Video Expansion
- Full PC-AT Software Compatibility
- 16-Bit PC/104 Bus Expansion Connector
- Compact: 5.75 x 8.00 Inches (146 mm x 203 mm)

WinSystems' LBC-486DX2 board defines a standard computing base that is a combination of the greatest common denominator of features requested for embedded applications. The board is 5.75 by 8.00 inches, and is available with the IntelDX2 or IntelDX4 processor offering operating speeds of 66 or 100 MHz. Additionally, off-the-shelf or user-designed PC/104 expansion modules are supported for video, LANs, analog, digital or other special purpose I/O functions.

The LBC-486DX2 features four onboard 32-pin EPROM sockets that support up to 2 Mbytes of Flash or battery-backed SRAM or up to 4 Mbytes of EPROM. Multiple jumper selectable memory maps permit these boards to support bootable ROMDISK or RAMDISK. WinSystems provides an installable device driver for use with MS-DOS and ROM-DOS operating systems.

Integrating the basic AT-peripheral complement, the board includes the system controller, two 8-channel interrupt controllers, real-time clock, 3 counter/timers, seven DMA channels, keyboard controller and speaker port. The precision power fail reset circuit, activity LED and watchdog timer makes it ideal for remote or unattended operation. A broad complement of onboard I/O includes two serial channels,



each with RS-232, and optional RS-422/485 levels, Centronics parallel I/O port, floppy disk controller, IDE hard disk interface, and 16-bit PC/104 expansion connector.

HOST SYSTEMS SUPPORTED:
PC Compatible Software (DOS, Windows, etc.)

PROCESSORS SUPPORTED:
Intel486™ DX2 and Intel486™ DX4 processors

AVAILABILITY:
Now

CONTACT:
WinSystems
715 Stadium Drive
Arlington, Texas 76011
Phone: (817) 274-7553
FAX: (817) 548-1358
e-mail: info@winsystems.com
WWW: <http://www.winsystems.com>